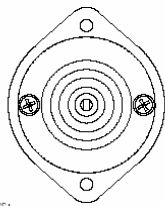
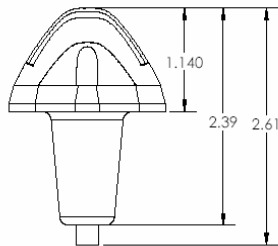
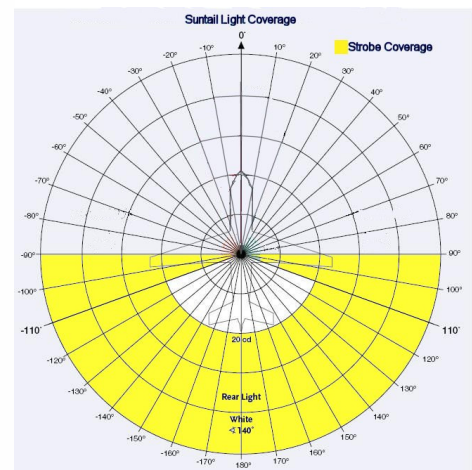
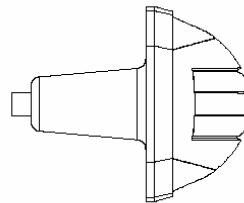
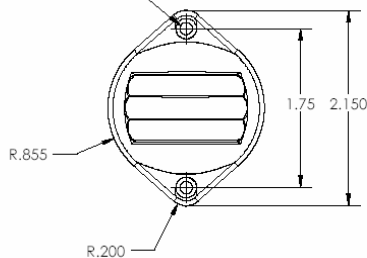




Product Datasheet Suntail Position/Strobe Light



Clearance Holes
For 4-40 Mount Screws



Voltage Range: 9-36VDC
 Current Draw at 12VDC: 1.7 Amp Avg / 4.5 Amps Peak
 Power Consumption: 20 Watts Avg
 Strobe Power Supply: Built In
 Strobe Synchronization: Built In
 Thermal Protection: Built In
 Position Light: TSO C30c Compliant
 Strobe: TSO C96a Class 2 Compliant
 LED Count: 18

Height: 2.15"
 Width: 1.7"
 Depth: 2.61"
 Weight: 3 Oz
 Heat Sink Material: Clear Anodized Aluminum
 Lens Material: Polycarbonate
 Screw Mount: 2x 4-40 Machine Screws
 Rated Life: 50,000 Hours
 Temperature Range: -55C to +70C