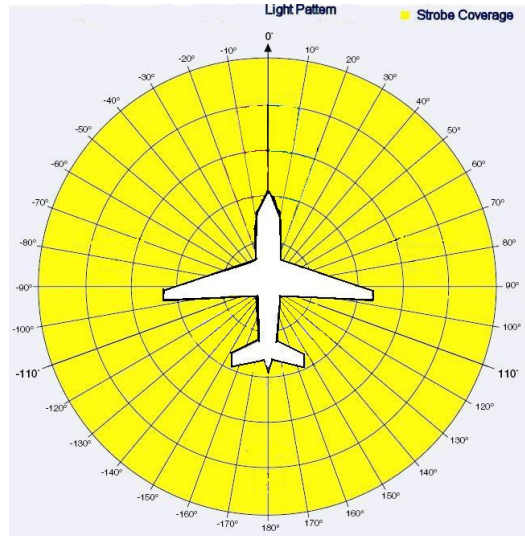
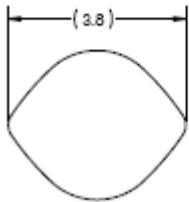
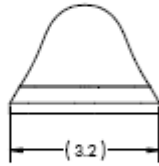
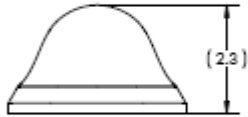
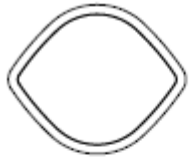




## Product Datasheet SunBeacon Beacon/Strobe Light



Voltage Range: 9-36VDC  
 Current Draw at 12VDC: 2.3 Amp Avg / 9 Amps Peak  
 Power Consumption: 27 Watts Avg  
 Power Supply: Built In  
 Synchronization: Built In  
 Thermal Protection: Built In  
 Strobe: TSO C96a Class 2 Compliant  
 Beacon: TSO C96a Class 1 Compliant  
 LED Count: 36

Height: 2.3"  
 Width: 3.2"  
 Length: 3.8"  
 Weight: 10 Oz  
 Heat Sink Material: Clear Anodized Aluminum  
 Lens Material: Polycarbonate  
 Rated Life: 50,000 Hours  
 Temperature Range: -55C to +70C